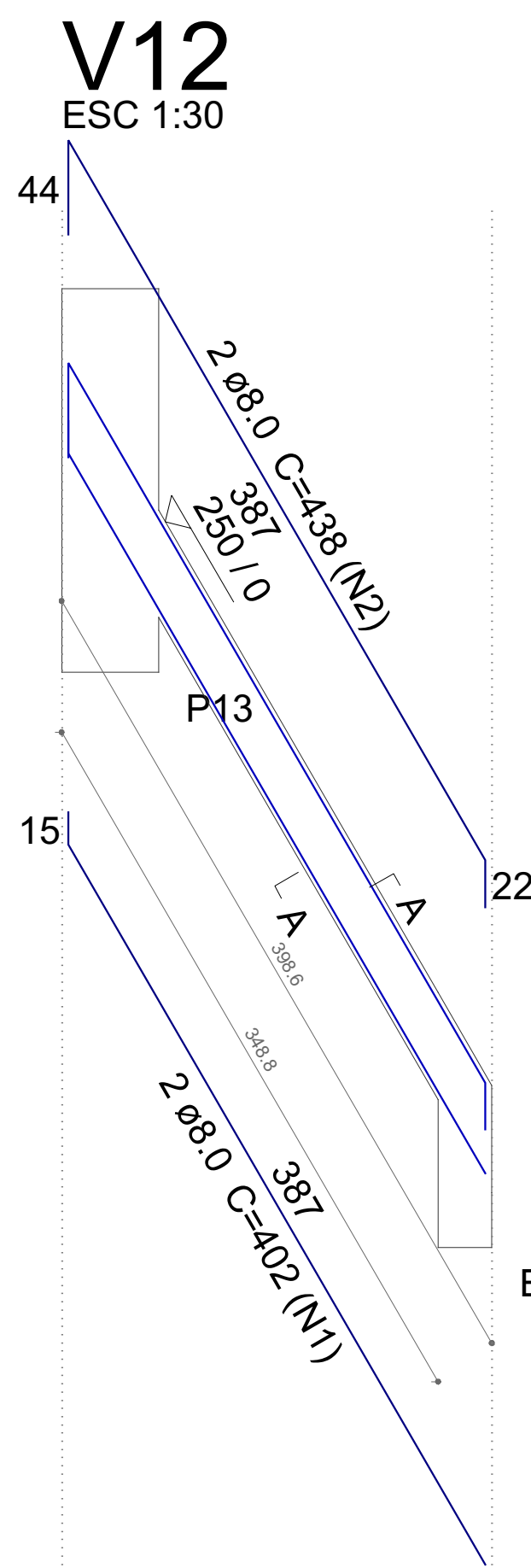
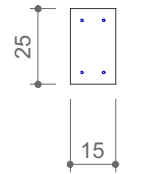
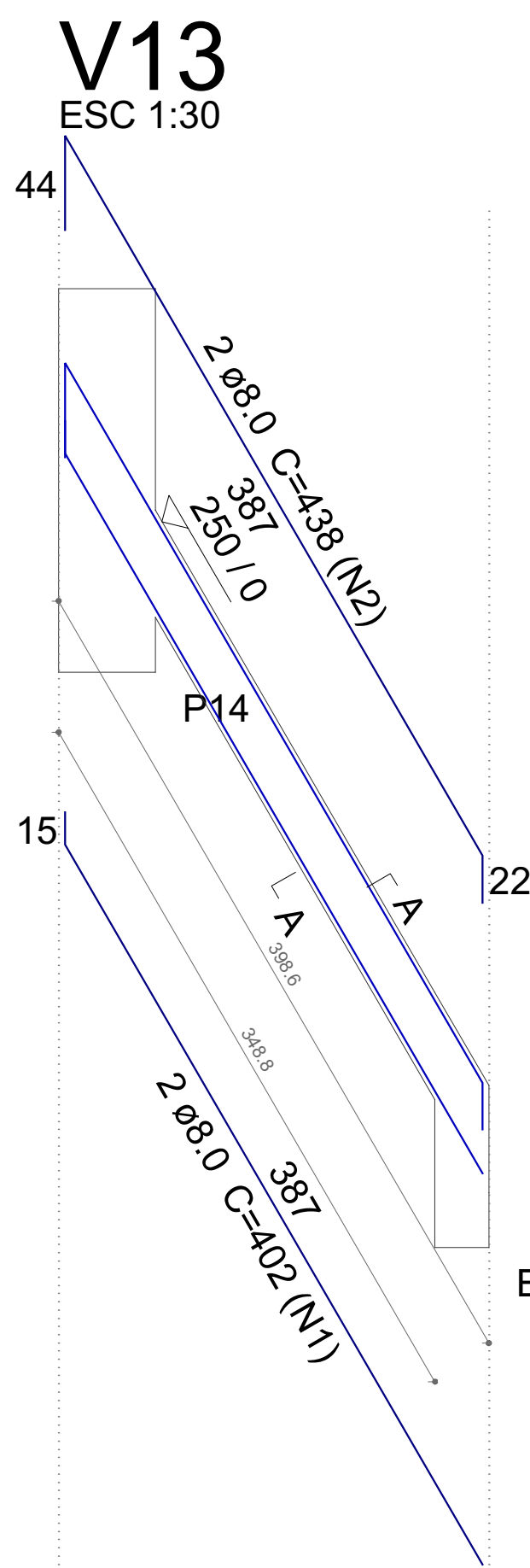
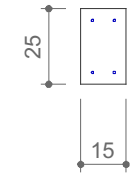


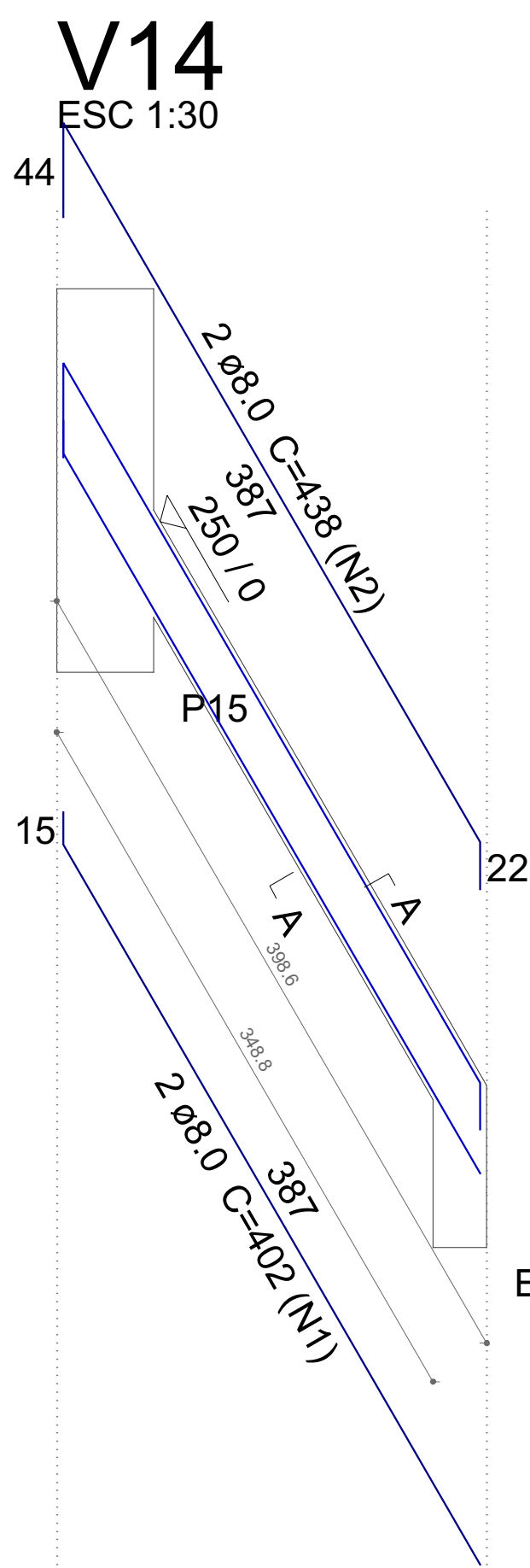
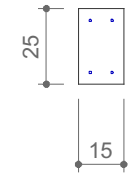
SEÇÃO A-A
ESC 1:25



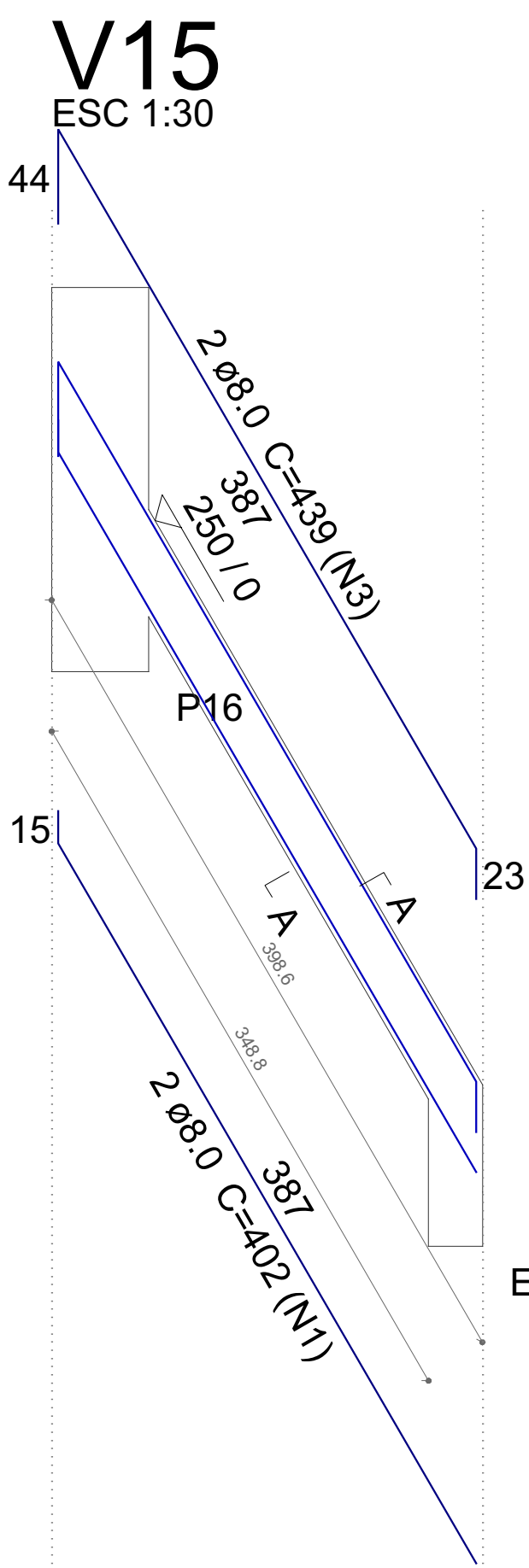
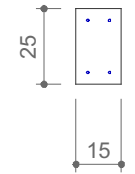
SEÇÃO A-A
ESC 1:25



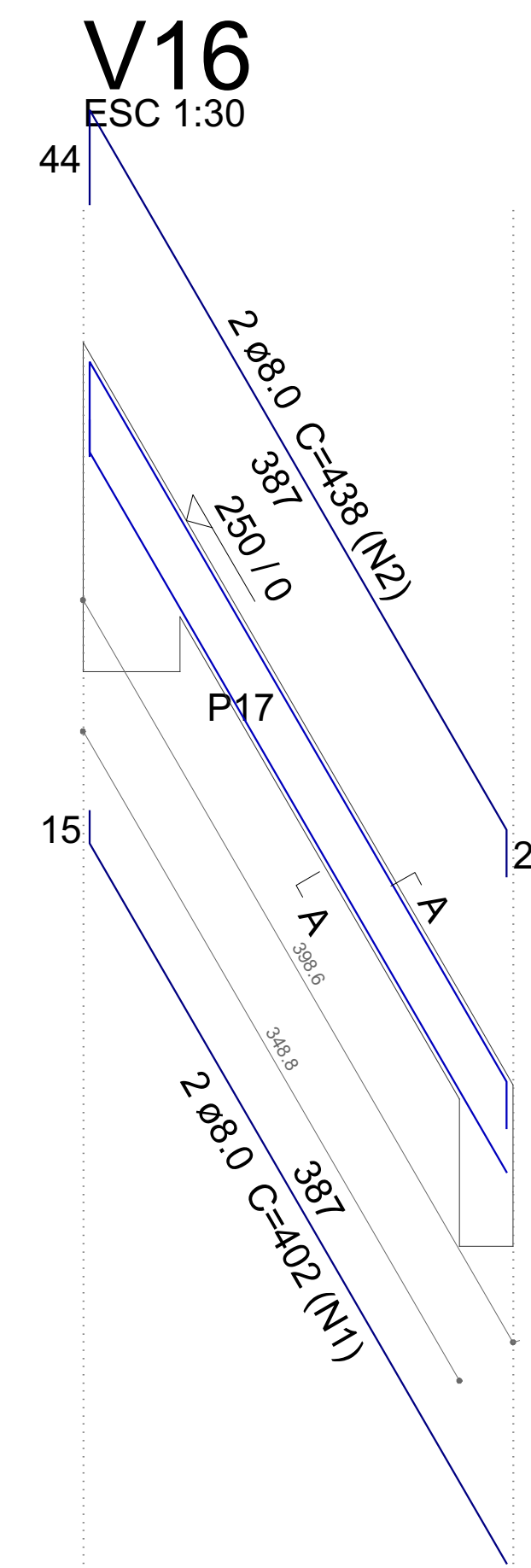
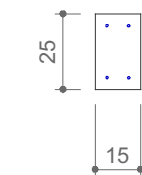
SEÇÃO A-A
ESC 1:25



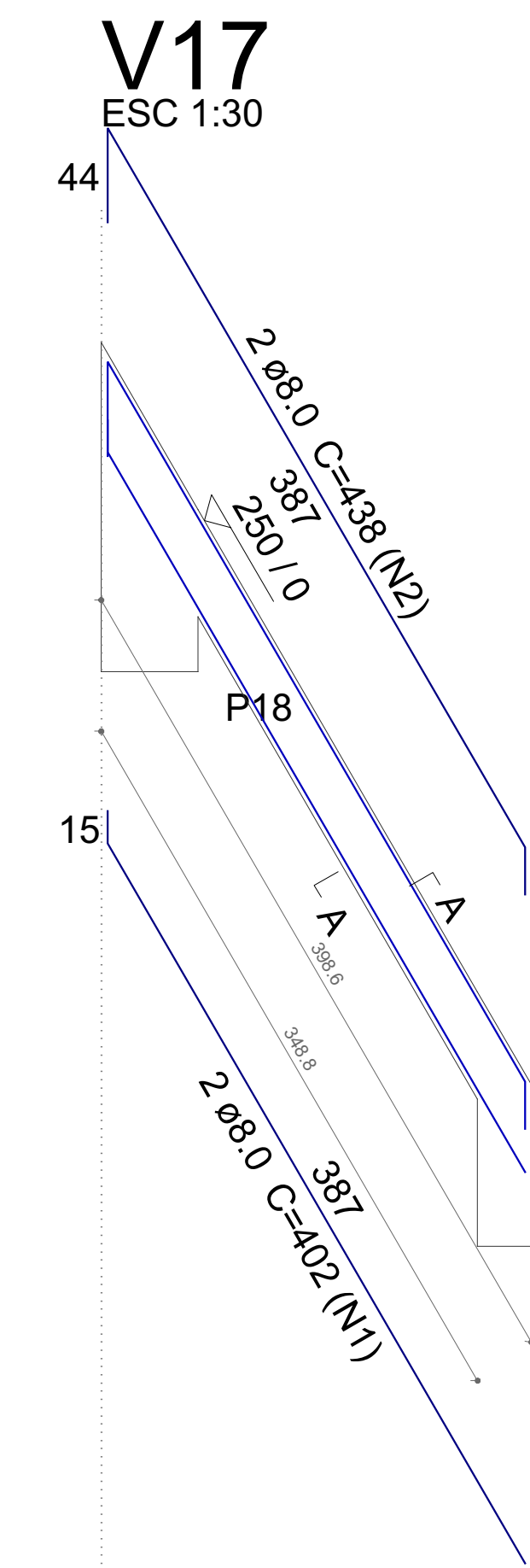
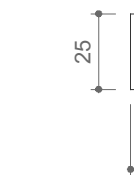
SEÇÃO A-A
ESC 1:25



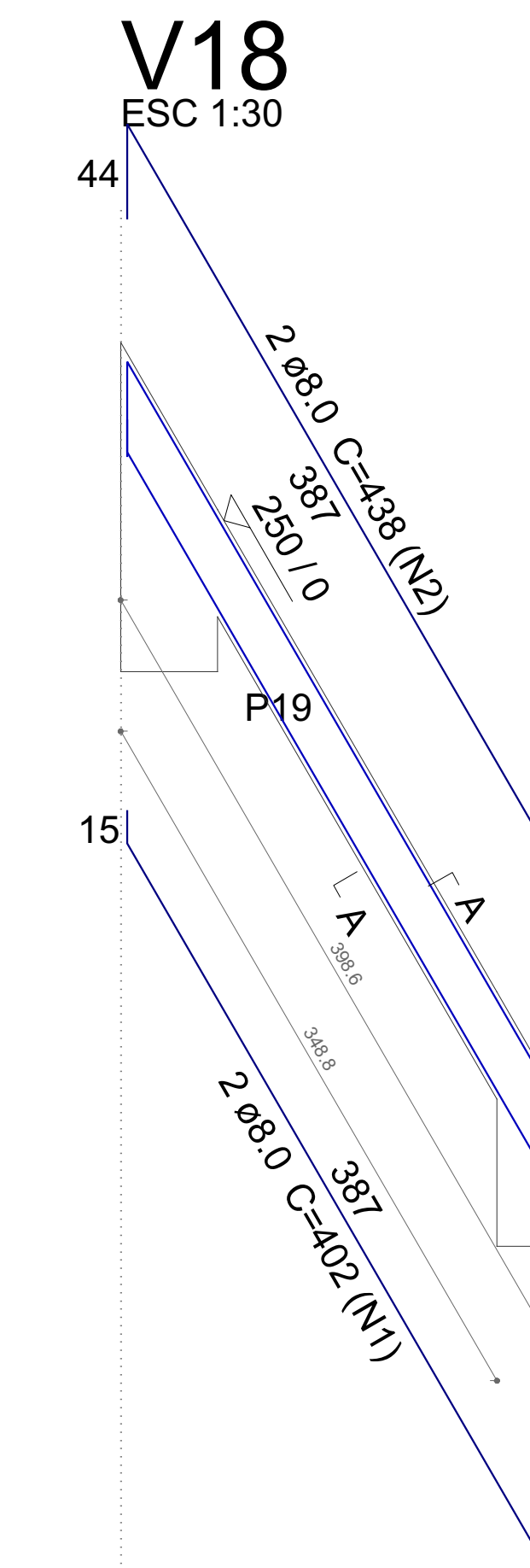
SEÇÃO A-A
ESC 1:25



SEÇÃO A-A
ESC 1:25



SEÇÃO A-A
ESC 1:25



SEÇÃO A-A
ESC 1:25



Relação do aço

V11		V12		V13	
V14		V15		V16	
V17		V18			
AÇO	N	DIAM (mm)	QUANT	C.UNIT (cm)	C.TOTAL (cm)
CA50	1	8.0	16	402	6432
	2	8.0	14	438	6132
	3	8.0	2	439	878

Resumo do aço

AÇO	DIAM (mm)	C.TOTAL (m)	PESO + 10 % (kg)
CA50	8.0	134.5	58.3
PESO TOTAL (kg)			
CA50	58.3		

Volume de concreto (C-30) = 0.85 m³
Área de forma = 14.65 m²

ESTATÍSTICA DA OBRA:		GESTÃO 2021/2024	
Finalidade da obra:			
Obra: USF - Dr. Carlos Felipe de Sio			
Local: LAR. DO SUL/Pr	Endereço da obra: Rua Barão do Rio Branco	Folha: 4/7	Últimas Atualizações:
Escala: INDICADA			
Data:			
Desenho: WANDER	Proprietário: PREF. MUN. DE LARANJEIRAS DO SUL CNPJ. 76.205.970/0001-95 AV. HONÓRIO BABINSKI - PAÇO MUNICIPAL Nº 01 CEP. 85301-000 FONE (042) 3635-8100 LARANJEIRAS DO SUL/PR		
MÃO-FRANCESA Detalhamento de vigas inclinadas			
Resp. p/ Projeto:			
LEONI LUIZ MELETTI CREA-PR 9.990/D			